

An underwater photograph with a dark, teal-green color palette. The water is filled with numerous small, bright bubbles and larger, out-of-focus air pockets. In the lower right corner, a human hand is visible, reaching upwards towards the surface. The overall atmosphere is mysterious and ethereal.

_BORN HUMAN

CREATIVE AGENCY

agency credentials



GAGGENAU



B/S/H/



BERTONCELLO
like no other.



appiani

CeramicaBardelli



Agrimaster



EVLO.NET



Awards



1st classified in Corporate
Content category



Special Star for
Copy Strategy



Special Star for
Structural Design



1st classified in Corporate
Identity No profit category



Special Star for
Concept Design



Short List nomination



Special Star for
Art Direction



Special Star for
Creative Direction



Short List nomination
Corporate Identity



Short List nomination
Internet

Social media & adv

We design and plan content for social media because our aim is to increase the awareness of our clients' brands, engage their communities and care for them.

Branding

We design and restyle visual identities and tailor-made visual outfits for brands, products and activities with a strong strategic and visual-based approach.

Photo and video

We think that images and videos are an effective way to approach present-day storytelling. We also produce innovative drone aerial shootings and 360° VR content to enjoy maximum immersion.

Digital presence

We create custom-made digital environments for our clients' brands: digital outfits, websites and digital activities are just some of the elements that make up our world.

Branding

Colomion
Kitenrg
Icona Design Group
Bertoncello
Memory CSF
Calliero SpA
and more

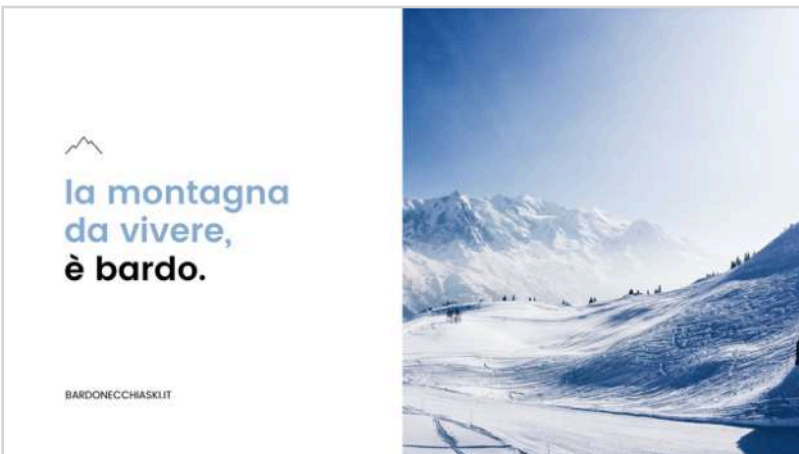
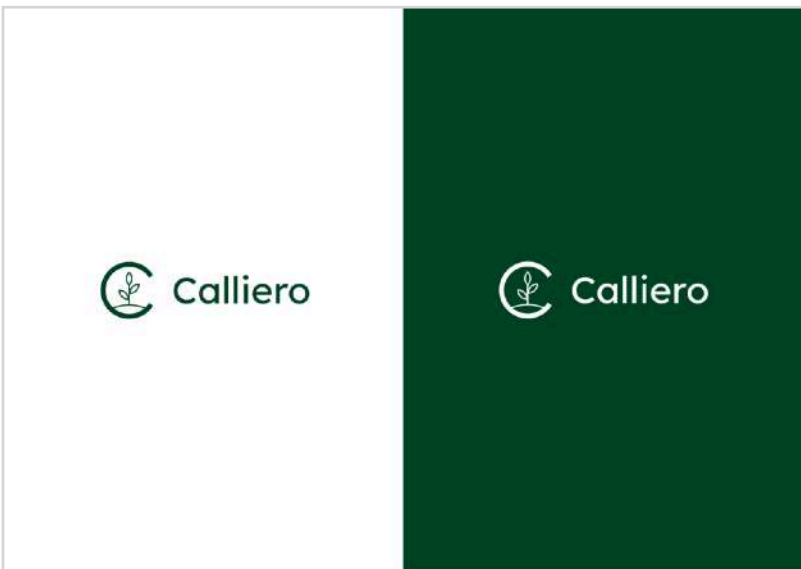
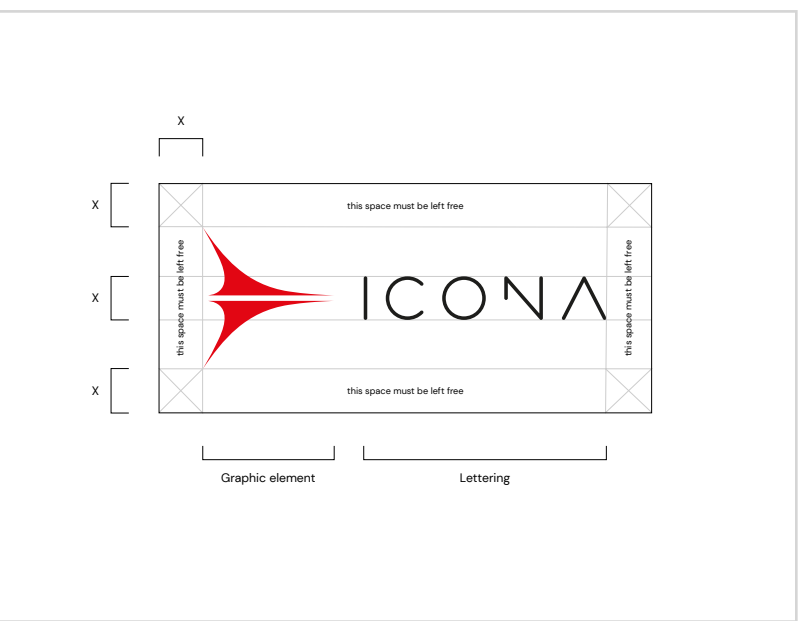
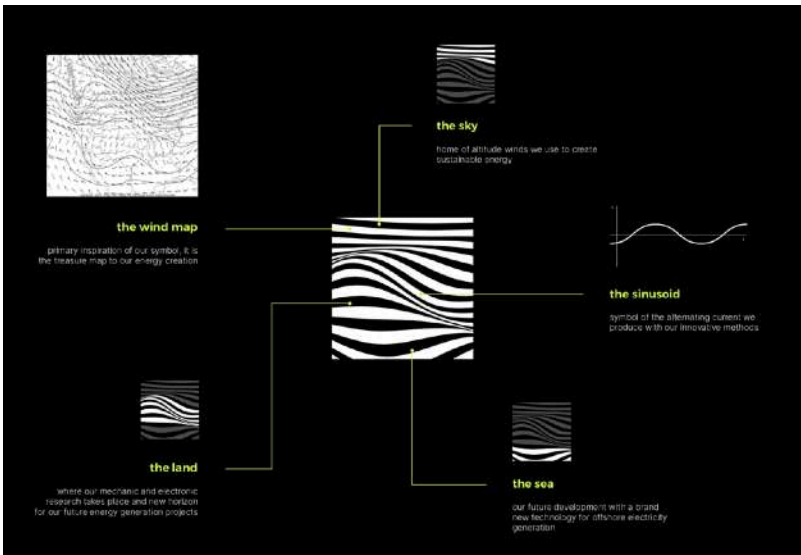
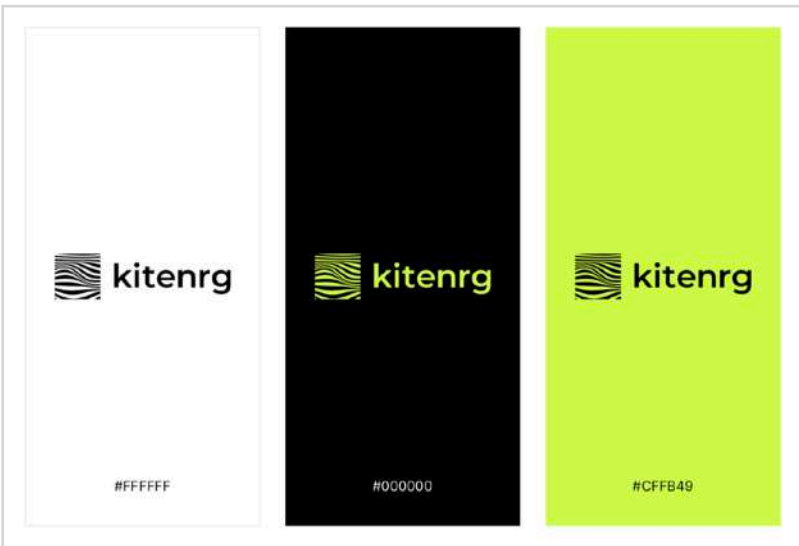
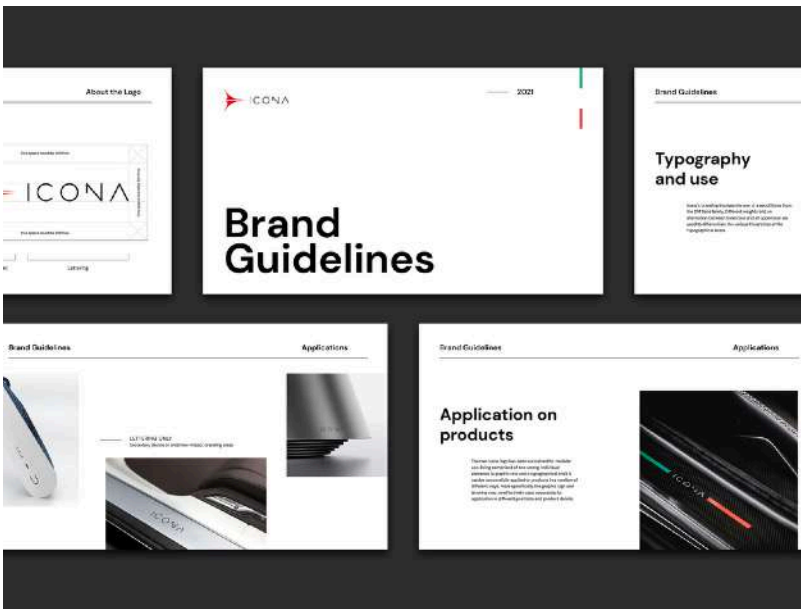
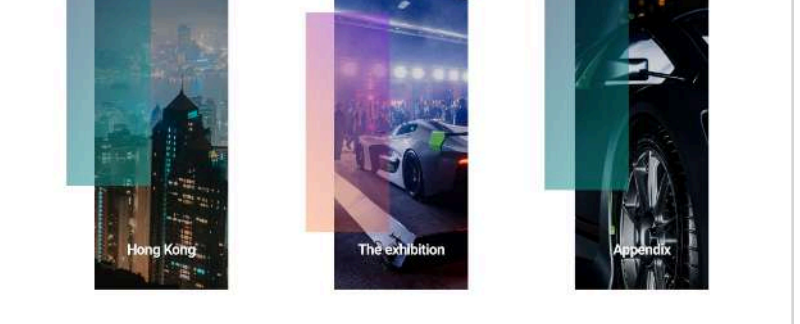
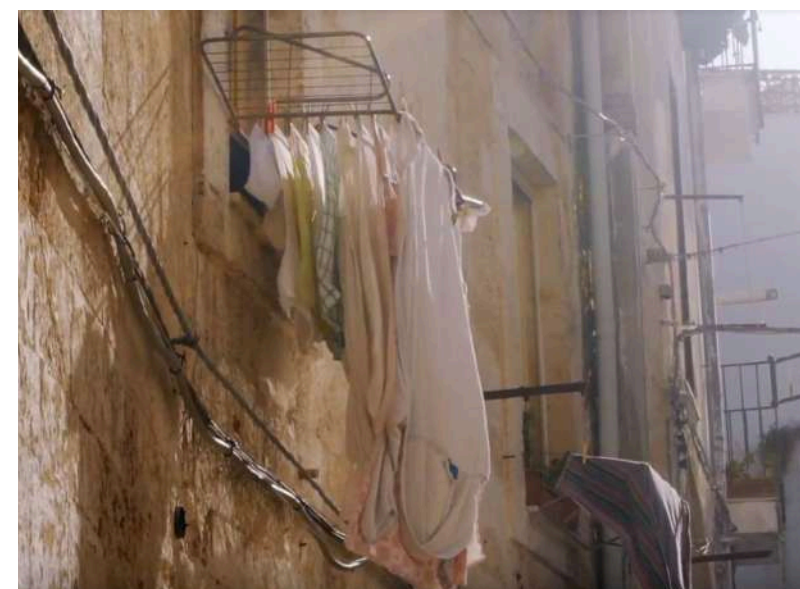
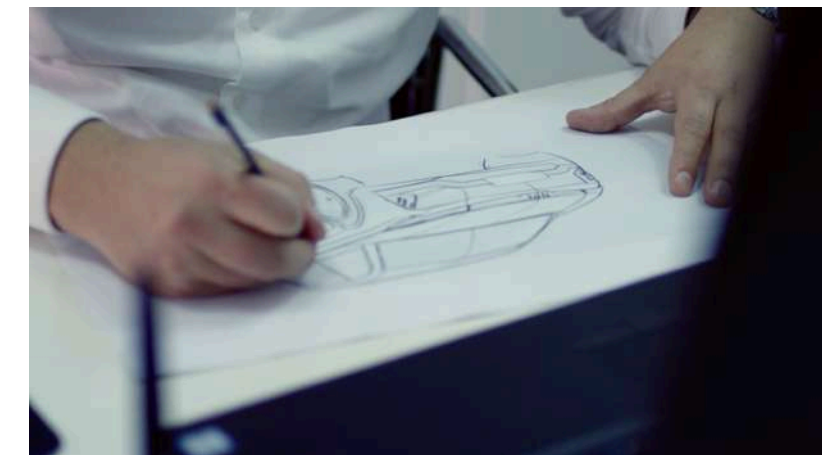
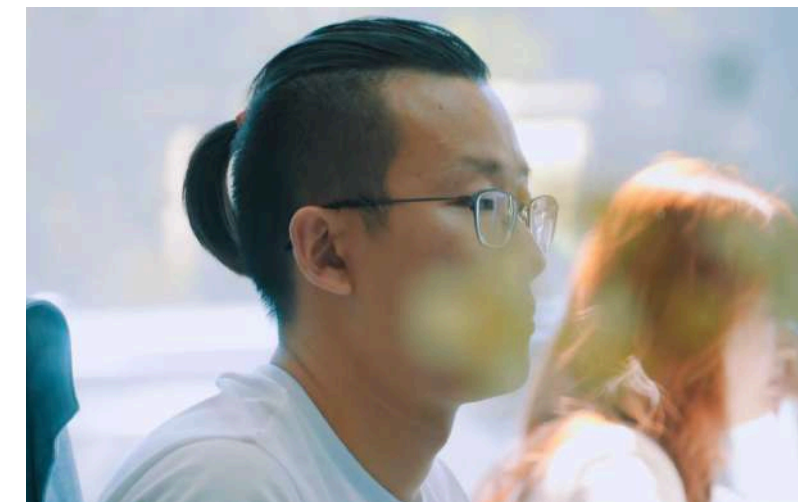
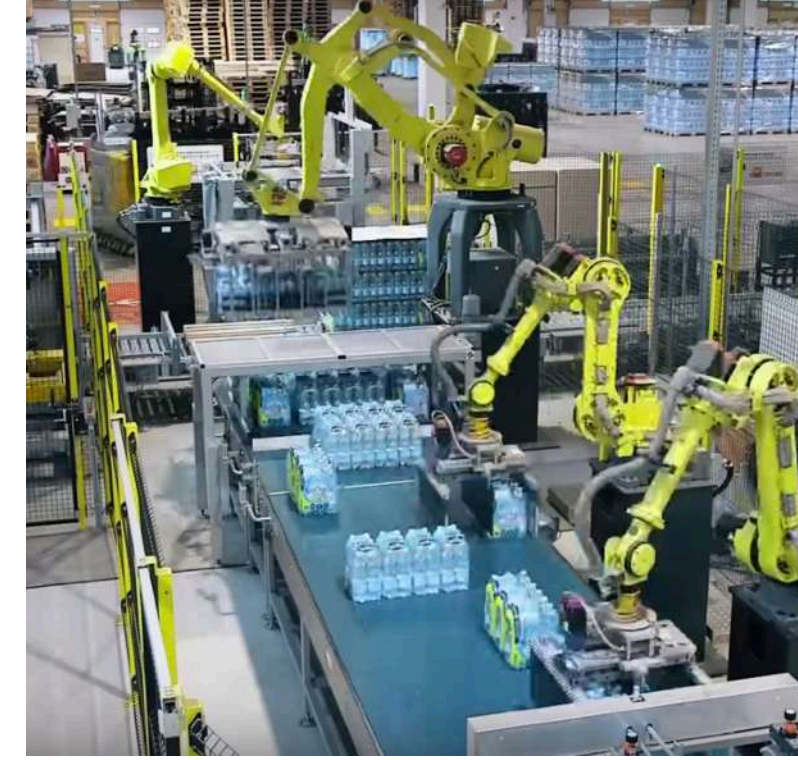
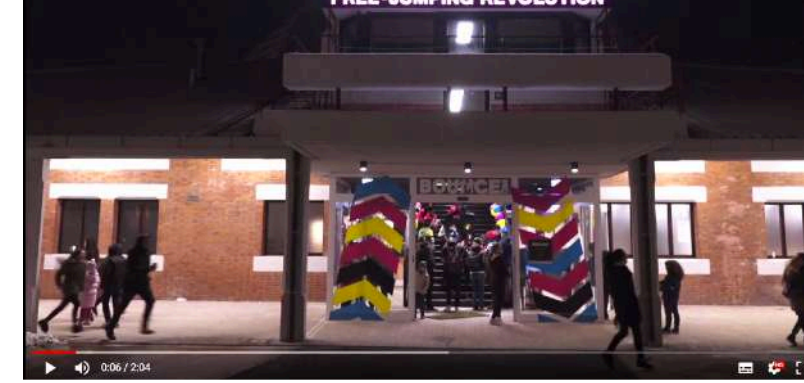


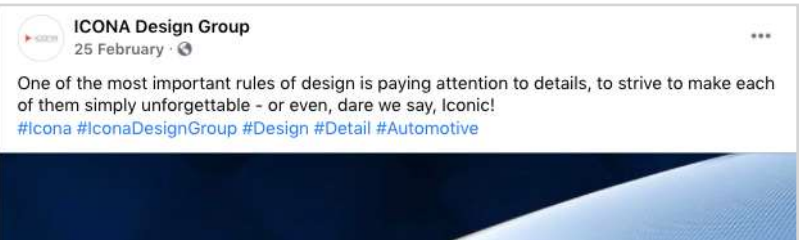
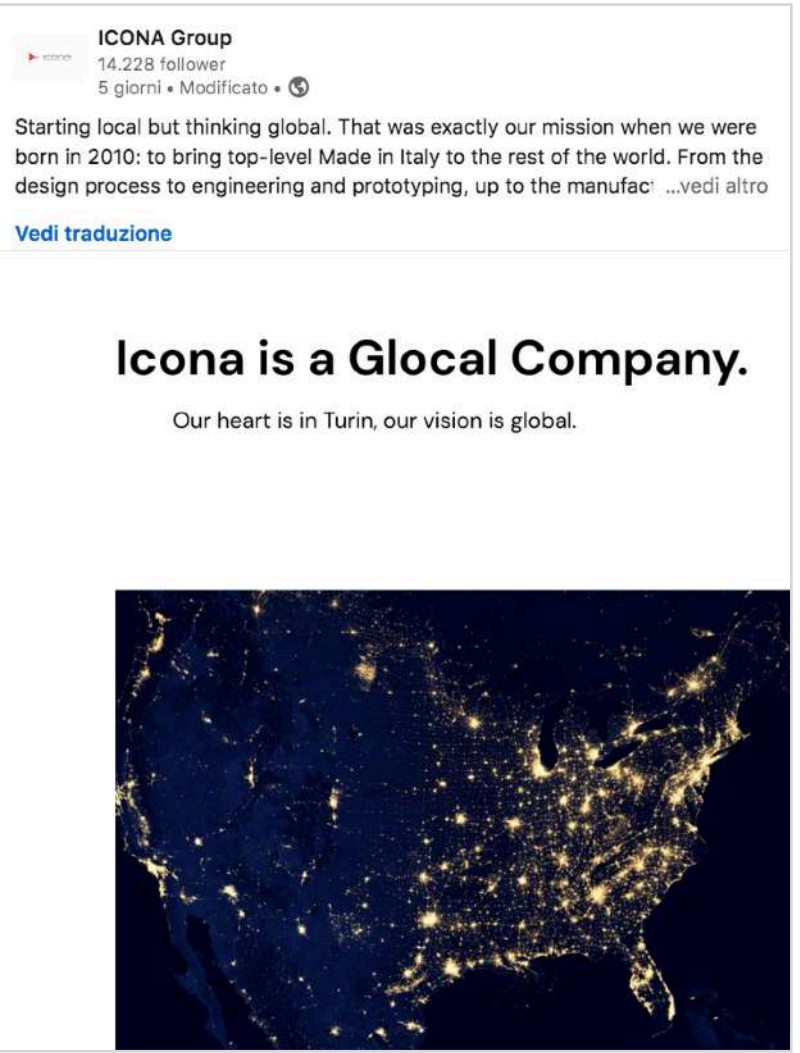
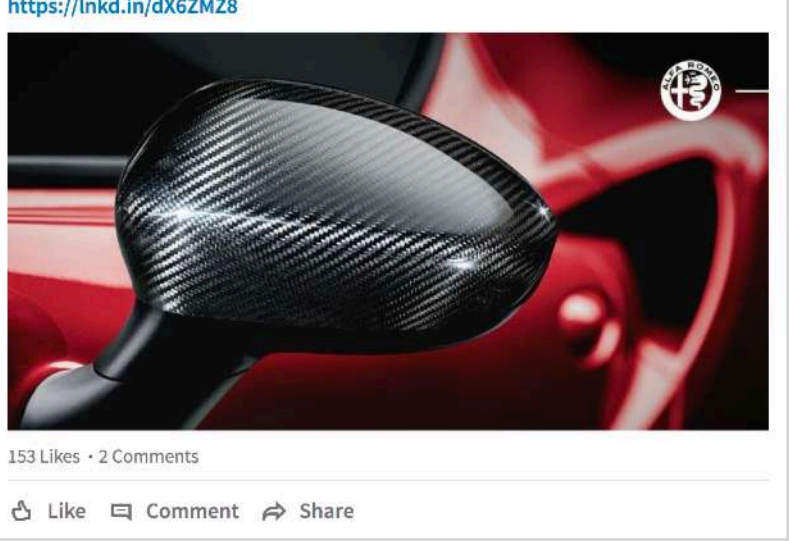
Photo and video

Icona Design Group
Bounce Inc
Cecomp (Microlino)
Tenuta Pinto
Federazione Italiana Epilessie
Acqua Sant'Anna
and more



Social media

NEFF
Icona Design Group
Acqua Sant'Anna
Humanitas
Sprint Reply
Alfa Romeo
and more



Web presence

Gaggenau
Icona Design Group

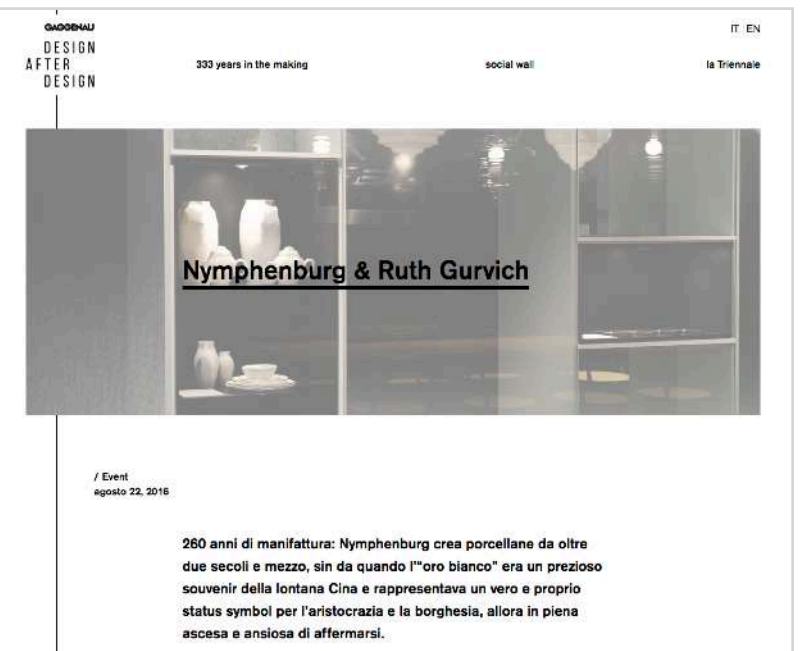
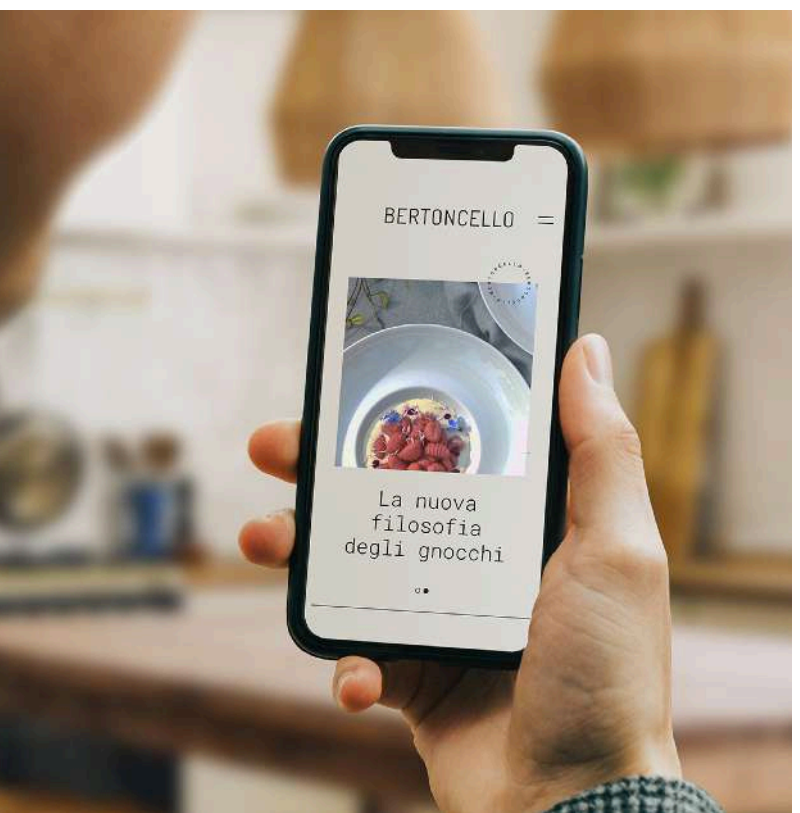
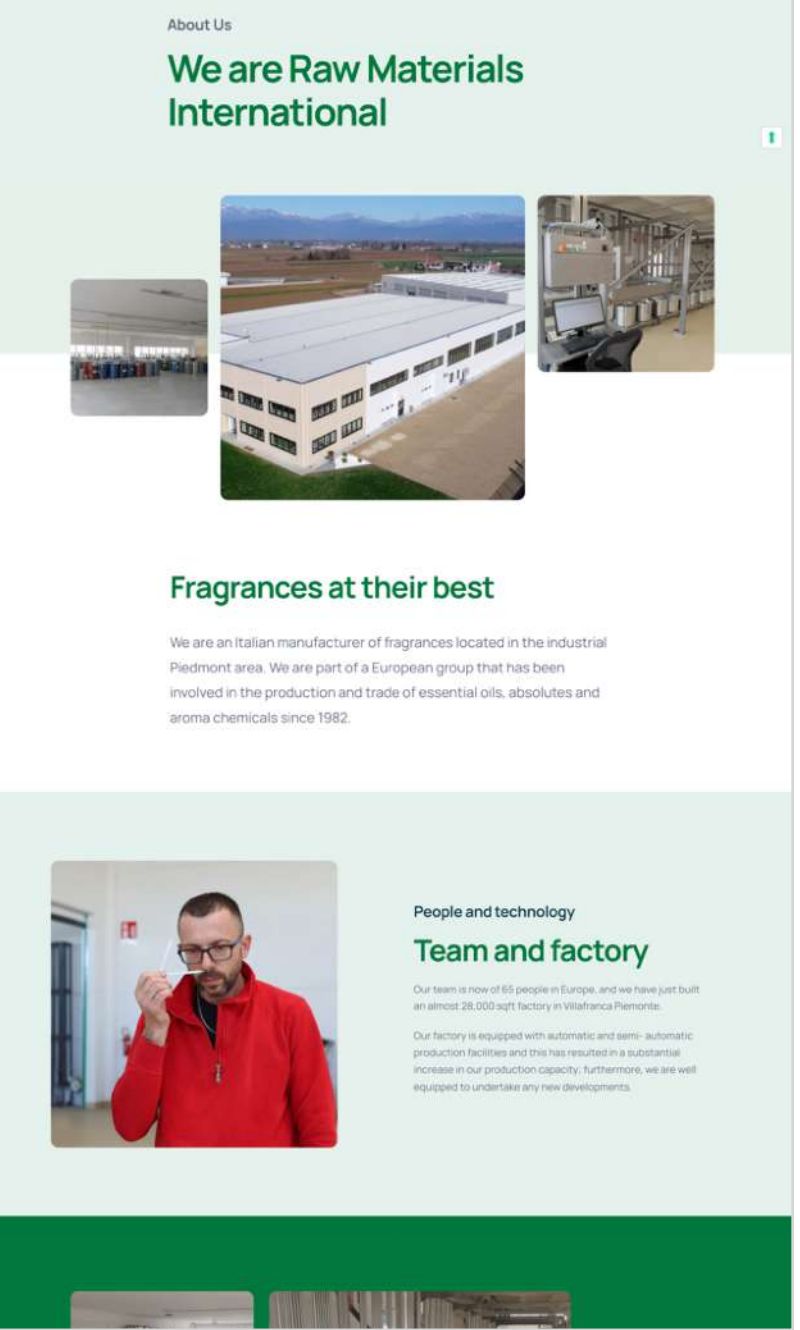
Calliero

Kitenrg

Bertoncello

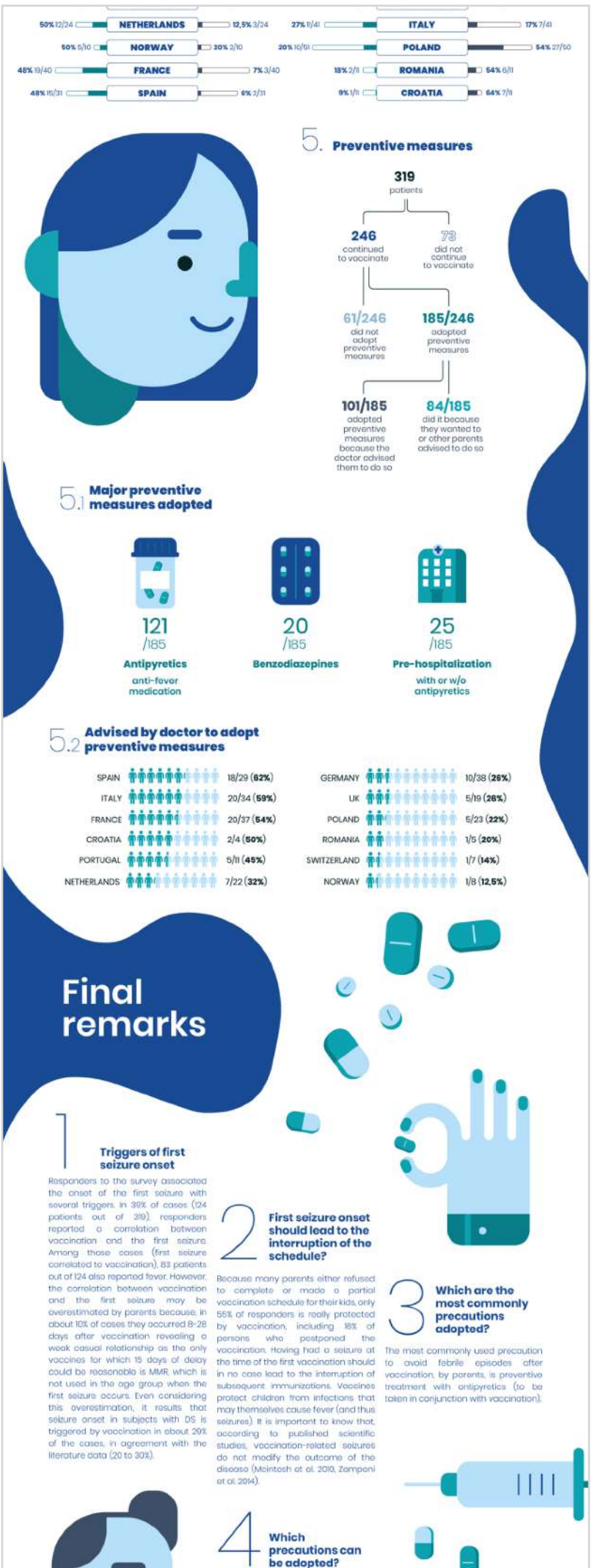
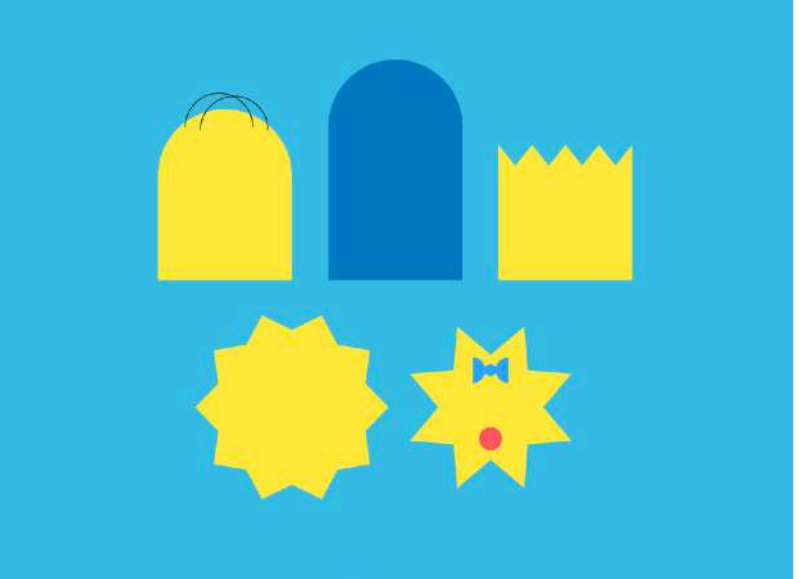
Acqua Mia Vallestura

and more



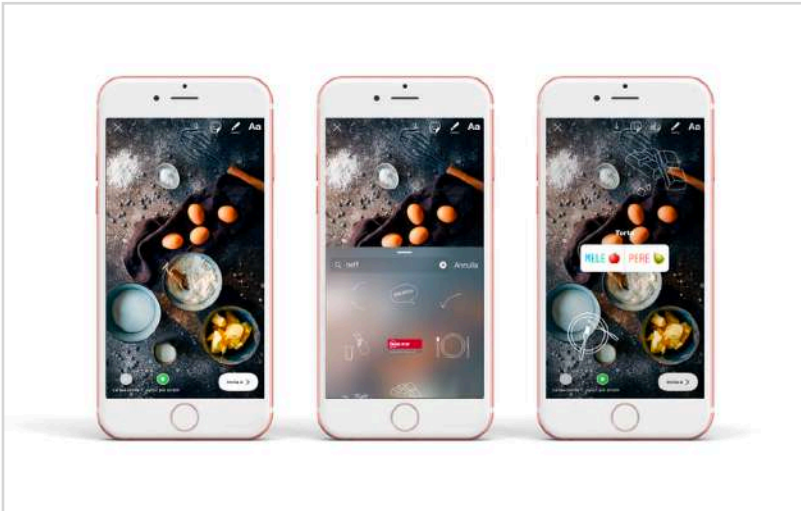
Illustration

Humanitas
Dravet Europe
Acqua Mia Vallestura
Gruppo Famiglie Dravet
Be my furniture
Expreso Sur
and more

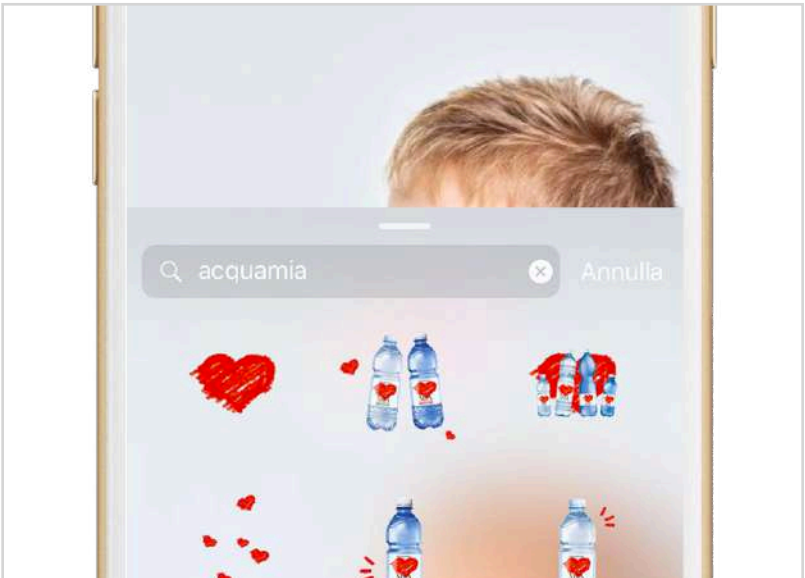


Other

Bounce Inc.
Altaeco
BSH
Toscana Gomma
Skin Labo
Federazione Italiana Epilessie
and more



Acqua Sant'Anna - Un'eccellenza italiana - santanna.it
Ann. www.santanna.it/ 
Dalla natura generosa delle Alpi Marittime la migliore acqua made in Italy.
Qualità e controlli - Un'eccellenza italiana



Acqua Sant'Anna tagged SanThè Limone 0,5L - Bottiglia. 
Pubblicato da Born Human [?] · 5 settembre alle ore 20:08 · 
La prima settimana di settembre è un trauma? 🤔 Allora non c'è modo migliore per iniziare la giornata se non con il vostro #SanThè preferito e una colazione freschissima al sapore d'estate: yogurt, frutta fresca e cereali! Guardate cosa ci propone Posate Spaite. 🍓



di Acqua Sant'Anna · 16 Febbraio 2022
L'EFFETTO SERRA
Quando si parla di inquinamento, surriscaldamento globale e crisi climatica, si nomina spesso anche l'effetto serra. Ma in cosa consiste [...] 
AMBIENTE ED ECOSOSTENIBILITÀ

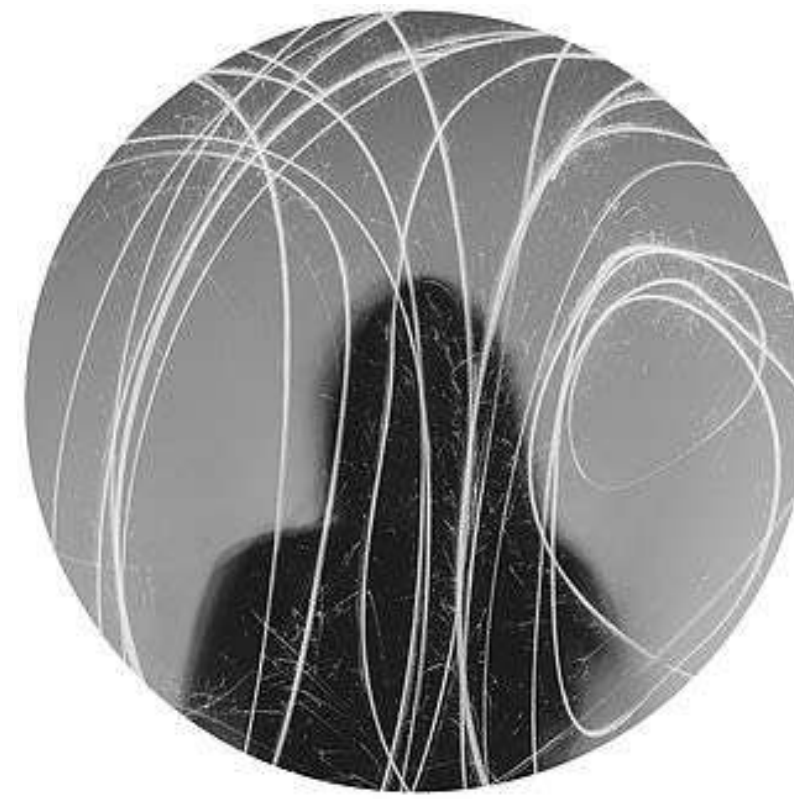


Founders



Francesca

Partner
Client manager



Elena

Partner
Strategist



Alberto

Partner
Visual designer



_BORN HUMAN

CREATIVE AGENCY



Via Vignale 8a, 10132 Torino

info@bornhuman.it

www.bornhuman.it